

PRODUCT INFORMATION PACKET

marathon[®]
Motors

Model No: 284TTDP7202
Catalog No: Y493
20,1800/900,DP,284T,3/60/460,2SPD,1WDG
Other Purpose



Regal and Marathon are trademarks of Regal Beloit Corporation or one of its affiliated companies.
©2018 Regal Beloit Corporation, All Rights Reserved. MC017097E

REGAL[®]

**Product Information Packet: Model No: 284TTDP7202, Catalog No:Y493
20,1800/900,DP,284T,3/60/460,2SPD,1WDG**

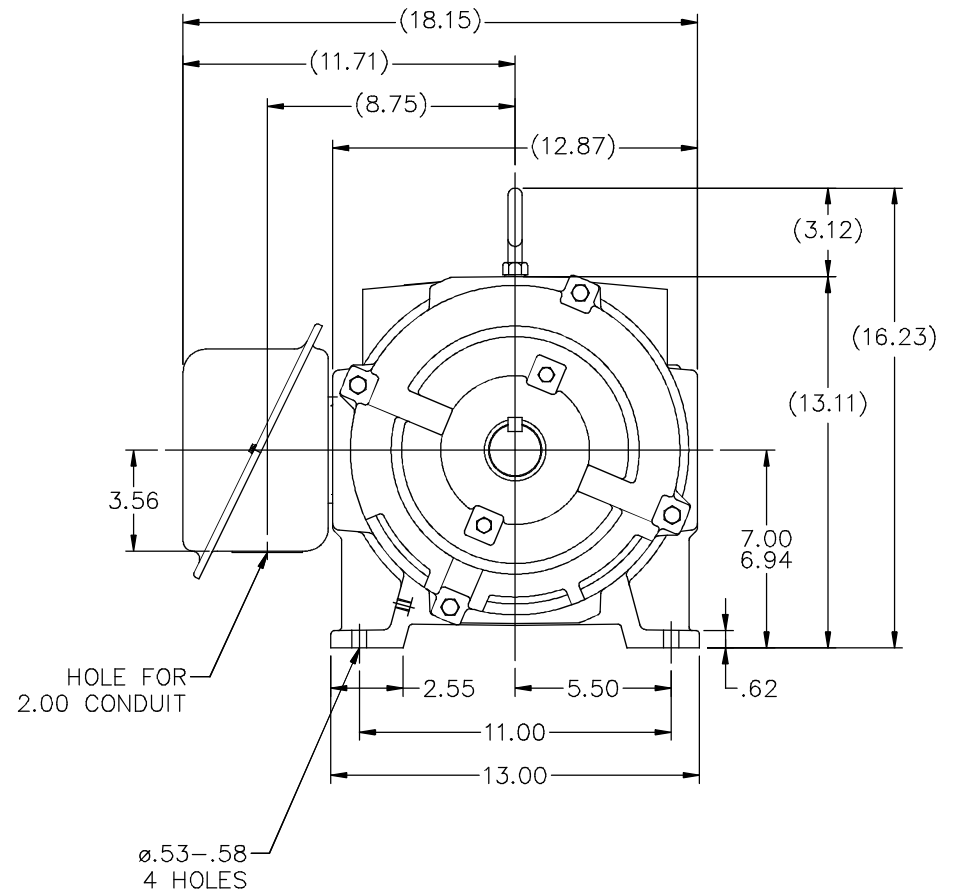
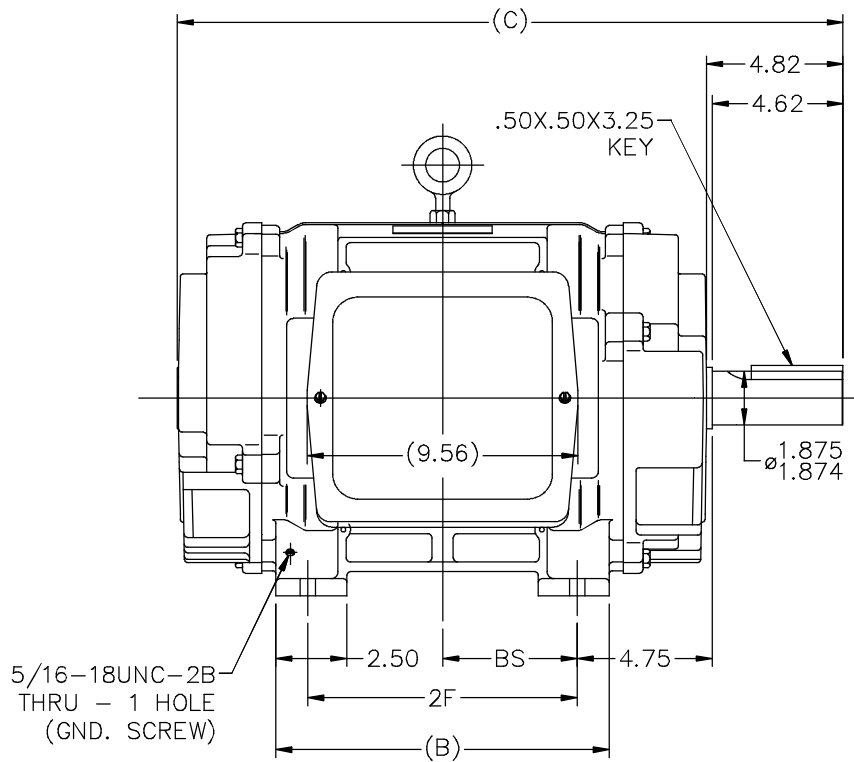
Nameplate Specifications

Output HP	20,5 Hp	Output KW	14.9 kW
Frequency	60 Hz	Voltage	460 V
Current	25,8 A	Speed	1765,876 rpm
Service Factor	1.15	Phase	3
Efficiency	87.5 %	Duty	CONTINUOUS
Insulation Class	B	Design Code	1VT
KVA Code	H	Frame	284T
Enclosure	DP	Overload Protector	NOT
Ambient Temperature	40 °C	Drive End Bearing Size	6311
Opp Drive End Bearing Size	6210	UL	Recognized
CSA	Y	CE	Y
IP Code	12		

Technical Specifications

Electrical Type	SQ CAGE IND RUN	Starting Method	ACROSS THE LINE
Poles	4/8	Rotation	REV
Mounting	RIGID	Motor Orientation	HORIZONTAL
Drive End Bearing	BALL	Opp Drive End Bearing	BALL
Frame Material	CAST IRON	Shaft Type	T
Overall Length	23.49 in	Frame Length	12.75 in
Shaft Diameter	1.88 in	Shaft Extension	4.82 in
Assembly/Box Mounting	F1/F2 CAPABLE		
Outline Drawing	B-SS200030-1275	Connection Diagram	A-EE7322

This is an uncontrolled document once printed or downloaded and is subject to change without notice. Date Created: 10/08/2018



NOTES

1. BOX CAN BE ROTATED IN 90° STEPS
2. BOX CAN BE MOUNTED ON OPPOSITE SIDE BY REMOVING BRACKETS AND TURNING FRAME 180°
3. NAMEPLATE TO BE READ FROM CONDUIT BOX SIDE OF MOTOR

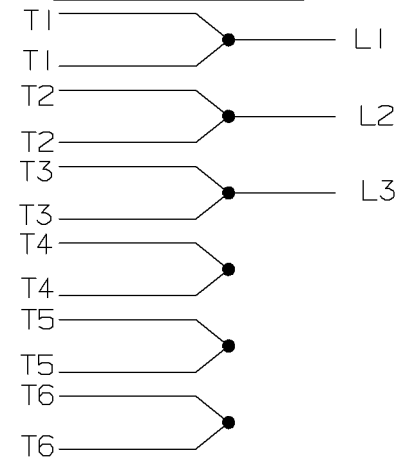
DASH	FRAME	B	C	2F	BS
1275	284T	11.75	23.49	9.50	4.75
1425	286T	13.25	24.99	11.00	5.50

				TOLERANCES UNLESS SPECIFIED		MARATHON ELECTRIC	DRAWN JL 11-17-1987		
				DEC.	INCHES		CHK JPN 11-20-1987		
10	RECAD IN AUTOCAD	RWR 05-27-2004		.X	±.1		APPD LS 11-25-1987		
9	REV. TO NEC CONDUIT BOX CN28428	NJS 02-10-2000	ML .XX	±.03	TITLE OUTLINE - DR. PR. - CAST IRON	SCALE 1=4.5			
8	SHOW GND. SCR. HOLE IN FRONT CN22833	PGK 08-14-1996	JPN .XXX	±.005	280T FR. - BB- TS - DBL. END VENT.	REF			
7	REMOVED FRONT EXT. CN21752-692	KL 07-23-1996	JPN .XXXX	±.0005	MAT'L	FMF			
NO.	REVISION	BY & DATE	CHK ANG	±7'30"	FINISH	PREV			
THIS DRAWING IN DESIGN AND DETAIL IS OUR PROPERTY AND MUST NOT BE USED EXCEPT IN CONNECTION WITH OUR WORK ALL RIGHTS OF DESIGN AND INVENTION ARE RESERVED THIS IS AN ELECTRONICALLY GENERATED DOCUMENT - DO NOT SCALE THIS PRINT				RFP	CAD FILE ss200030	SIZE B	DRAWING NO. SS200030	PAGE OF 10	REV. 10
				DIST LB					

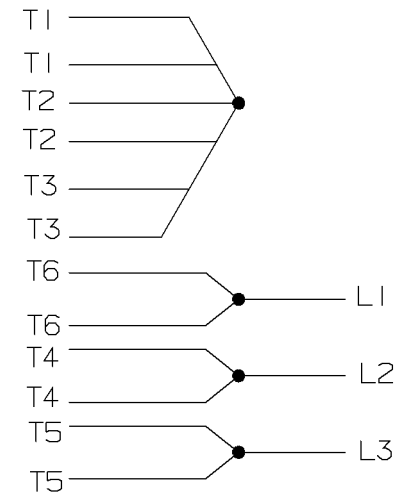
A- EE7322

FOR DUAL LEADS

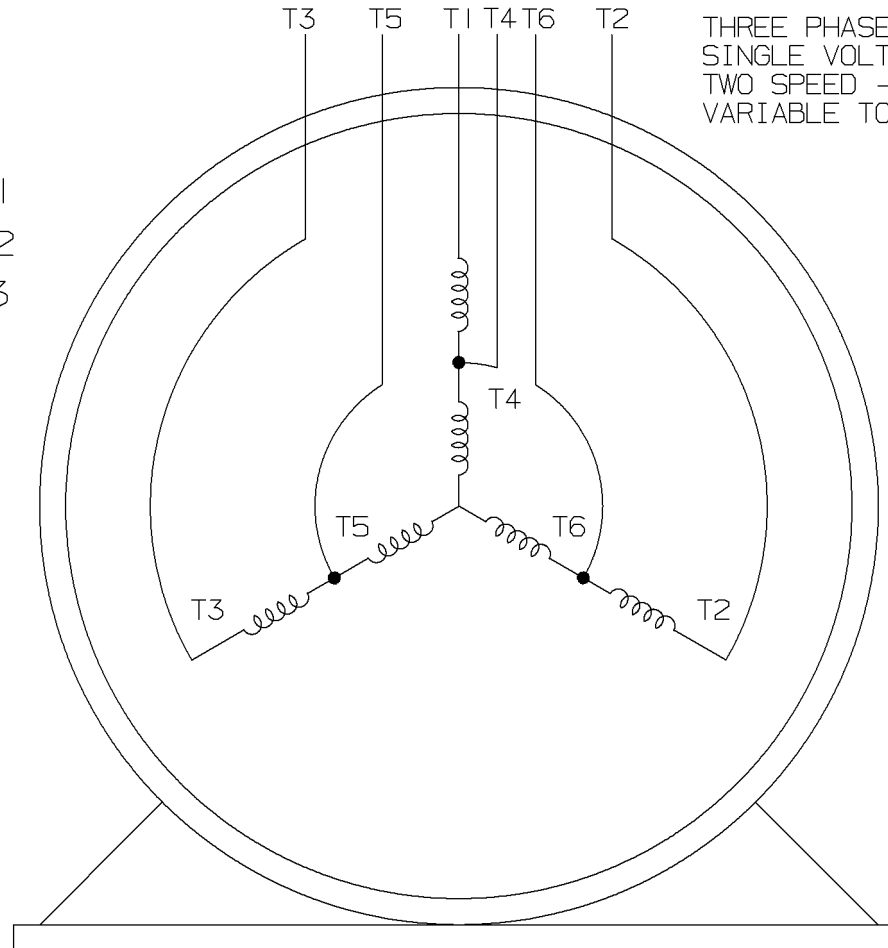
LOW SPEED



HIGH SPEED

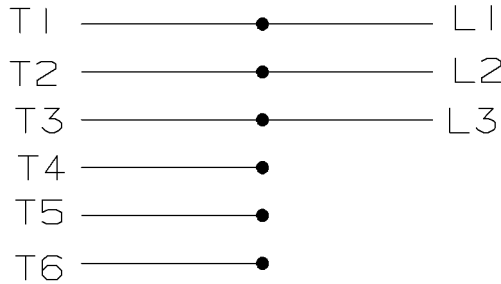


THREE PHASE MOTOR
SINGLE VOLTAGE
TWO SPEED - SGL. WDG.
VARIABLE TORQUE

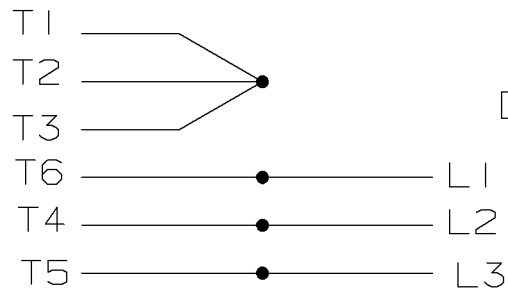


VIEW OF TERMINAL END

LOW SPEED



HIGH SPEED



T612C

T48B

				✓ MAX. SURFACE ROUGHNESS UNLESS NOTED OTHERWISE	UNLESS OTHERWISE SPECIFIED DIMENSIONS ARE IN INCHES TOL. ON XX± XXX±.005 XXXX±.0005 ANGLES±		
				MATL SPEC			DRAWN BY PGK 12-26-1996
				FINISH	MARATHON ELECTRIC		CHKD BY ML 01-07-1997
7	01-08-1997	REDRAWN ON CADD	CN 24000-27	PGK	REFERENCE DRW.	WAUSAU, WISCONSIN 54401	APPD BY TB 01-07-1997
REV	DATE	CHANGE	NAME	PART NAME CONNECTION DIAGRAM 3Ø - SINGLE VOLTAGE - 2 SPEED			DRWG NO A-EE7322

SHOP BOOK

PURCHASED

DISTRIBUTION - WA - LB - WP - LM - BR

CADD FILE NO.

EE7322